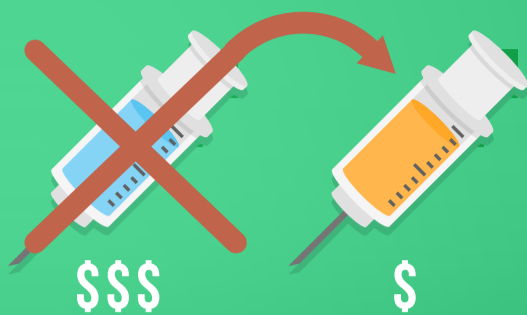


THE IMPACT OF COST-MOTIVATED TREATMENT CHANGES

COMMERCIAL HEALTH PLANS ANALYSIS

Forcing stable patients onto a less costly drug for **non-medical reasons** can hurt patients' health. It can also **increase** overall health care expenses.



SWITCHING COSTS

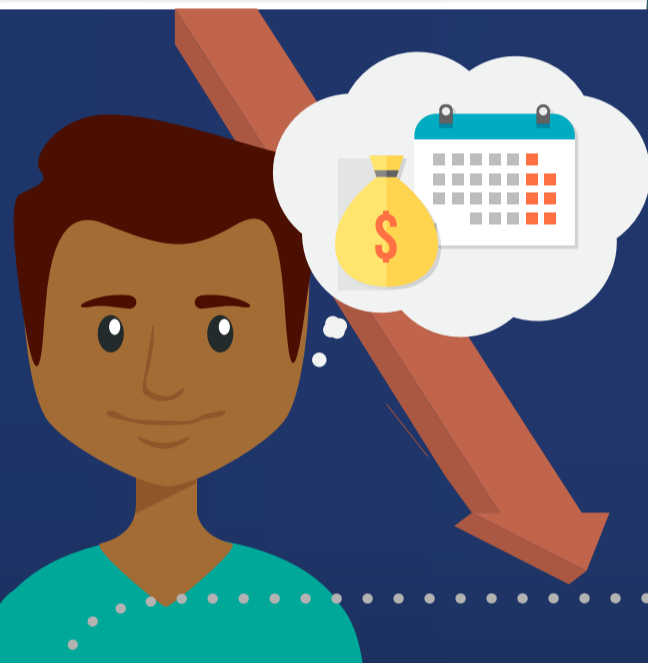
Switches to **lower-cost drugs** yielded **higher average non-drug expenses** later on.

Patients who underwent multiple switches also saw higher average non-drug costs.



CONTINUITY OF CARE SAVES

Patients who **did not switch** medications had the lowest per-member, per-month spending.



FOR PATIENTS WITH...



Asthma



Chronic Pain



Chronic Obstructive Pulmonary Disorder



Crohn's Disease



Hypercholesterolemia



Multiple Sclerosis



Osteoporosis



Psoriasis



Rheumatoid Arthritis

WHEN HEALTH PLANS IMPOSE
NON-MEDICAL SWITCHING,
EVERYBODY PAYS.

